	KINCARDINE OFFSHORE WINDFARM PROJECT	Document Number KOWL-MEM-0001-078
	Memorandum	Issue Date 13/09/2022
		Page 1 of 8

Notice to Mariners of Activities associated with the Disconnection and Tow of KIN-02

1) Summary

Please be advised that the floating wind turbine KIN-02 will shortly be towed to a quayside facility for maintenance. The tow is due to commence on 22nd of September 2022.

The tow is planned for 9 – 18 days.

- The tow vessel is the Boulder



The location of KIN-02 is

WGS 84 UTM ZONE 30N				
	Easting	Northing	Latitude	Longitude
KIN-02	568 419.8	6 317 649.5	56° 59' 50.29" N	1° 52' 25.54" W

KIN-02 Main Dimensions		
Dimension	Value	Unit
Length (max)	75.36	m
Platform depth moulded	29	m
Turbine hub height	104	m
Diameter of blades	164	m
Operating draft	18	m
Power of the Vestas V164 turbine	9.5	MW

2) Tow Route

The tow route is as follows:



**KINCARDINE OFFSHORE
WINDFARM PROJECT**

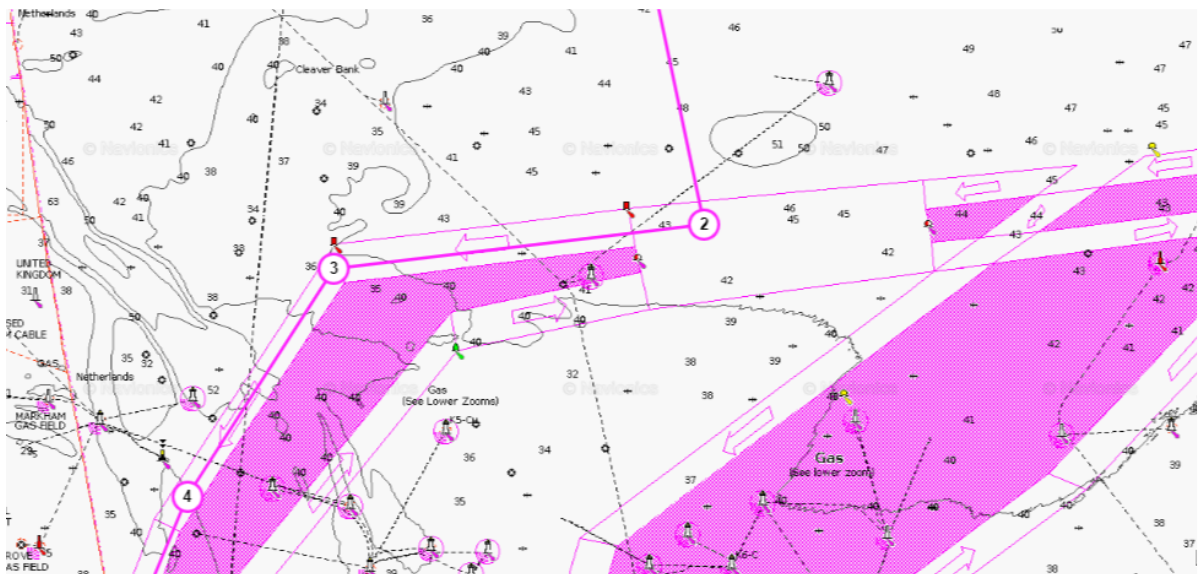
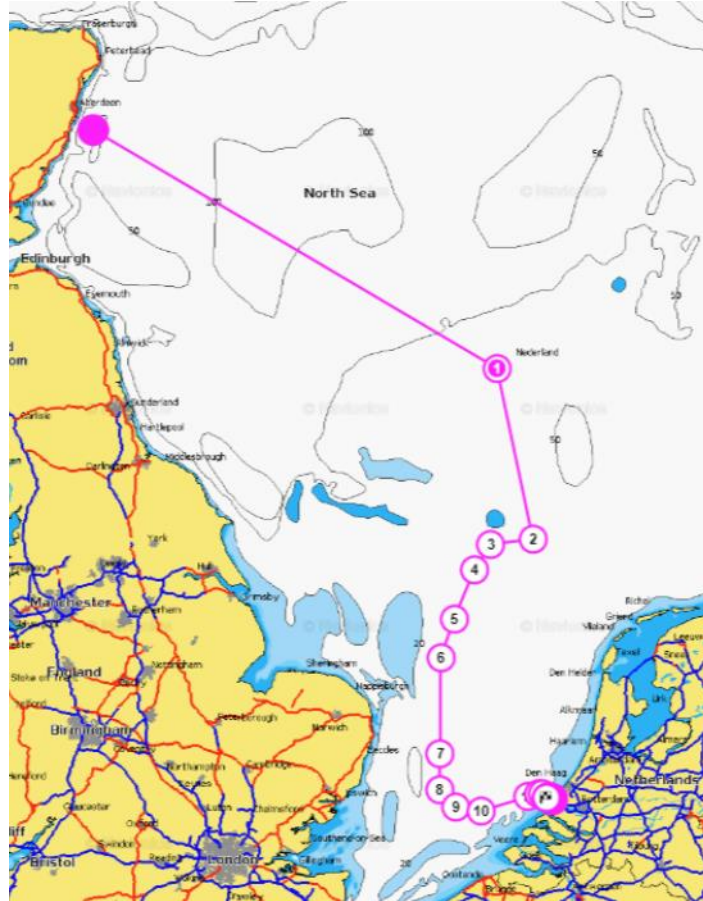
**Document Number
KOWL-MEM-0001-078**

Memorandum

Issue Date

13/09/2022

Page 2 of 8





**KINCARDINE OFFSHORE
WINDFARM PROJECT**

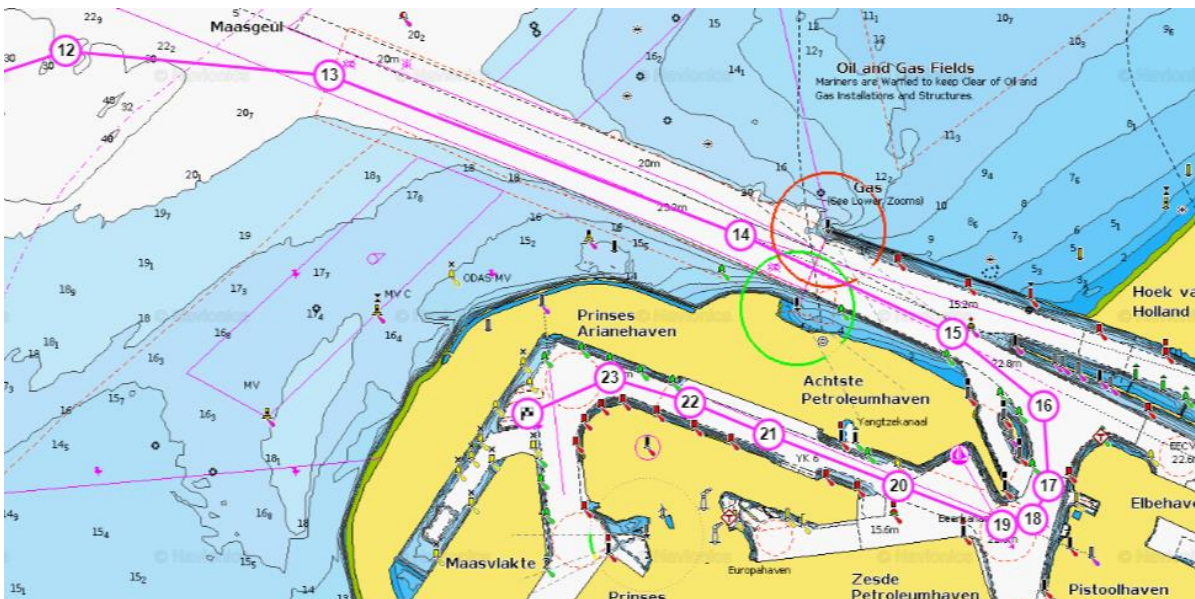
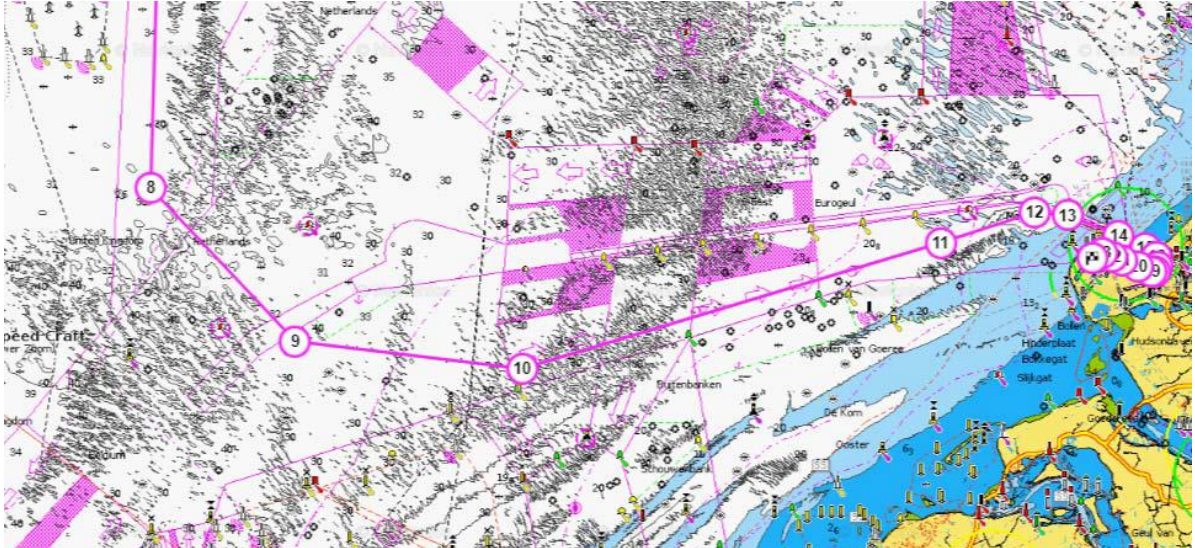
**Document Number
KOWL-MEM-0001-078**

Memorandum

Issue Date

13/09/2022

Page 3 of 8



WPT	Latitude	Longitude	Way Point Remarks
WPT 0	56°59,339'N	1°51,114'W	Kincardine Offshore site
WPT 1	55°16,359'N	3°21,833'E	Offshore route
WPT 2	53°59,598'N	3°49,750'E	1st DW Route entry
WPT 3	53°57,319'N	3°17,217'E	DW Route



**KINCARDINE OFFSHORE
WINDFARM PROJECT**

Memorandum


**Document Number
KOWL-MEM-0001-078**

Issue Date

13/09/2022

Page 4 of 8

WPT 4	53°45,489'N	3°4,312'E	DW Route
WPT 5	53°22,677'N	2°48,893'N	DW Route
WPT 6	53°4,716'N	2°38,122'E	DW Route
WPT 7	52°19,342'N	2°37,919'E	DW Route
WPT 8	52°2,194'N	2°37,117'E	DW Route
WPT 9	51°53,932'N	2°49,778'E	DW Routes Junction
WPT 10	51°52,426'N	3°9,620'E	DW Route
WPT 11	51°59,229'N	3°46,275'E	DW Route
WPT 12	52°0,877'N	3°54,492'E	Harbour tug connection to column 1
WPT 13	52°0,714'N	3°57,378'E	1 st Harbour Towing
WPT 14	51°59,901'N	4°1,320'E	Pilot Boarding zone
WPT 15	51°59,634'N	4°1,886'E	1 st Harbour Towing
WPT 16	51°58,485'N	4°5,189'E	1 st Harbour Towing
WPT 17	51°58,977'N	4°4,199'E	1 st Harbour Towing
WPT 18	51°57,730'N	4°5,073'E	1 st Harbour Towing
WPT 19	51°57,678'N	4°4,745'E	Assister disconnection and harbour tugs connection to column 2 and 3
WPT 20	51°57,948'N	4°3,610'E	2 nd harbour towing Zone affected by tide
WPT 21	51°58,290'N	4°2,184'E	2 nd harbour towing Zone affected by tide
WPT 22	51°58,513'N	4°1,323'E	2 nd harbour towing Zone affected by tide
WPT 23	51°58,673'N	4°0,448'E	2 nd harbour towing


	KINCARDINE OFFSHORE WINDFARM PROJECT	Document Number KOWL-MEM-0001-078
	Memorandum	Issue Date 13/09/2022
		Page 5 of 8

			Zone affected by tide
Dolphins	51°58,431'N	3°59,550'E	Dolphins connection

3) Vessel Associated with KIN-02 Tow to Repair Port

Vessel Name Boulder
Call Sign OZNB2
IMO 9151577
DP Class 2
MMSI 219296000
Length 84.6m
Breadth 18.8m
Draught 9.0m
Vsat telephone:- +45 322 22 601
Email boulder@jdcon.dk



	KINCARDINE OFFSHORE WINDFARM PROJECT	Document Number KOWL-MEM-0001-078
	Memorandum	Issue Date 13/09/2022
		Page 6 of 8

4) Kincardine Offshore Turbine Locations

Turbine Locations				
Ident	WGS84		UTM30	
	Longitude	Latitude	Easting	Northing
KIN-01	1°52'51.98"W	57°00'19.28"N	567958.90	6318538.50
KIN-02	1°52'25.54"W	56°59'50.29"N	568419.80	6317649.50
KIN-03	1°51'58.99"W	56°59'21.38"N	568882.58	6316763.16
KIN-04	1°51'18.09"W	57°01'07.00"N	569518.21	6320040.23
KIN-05	1°50'51.55"W	57°00'38.05"N	569980.83	6319152.74



KINCARDINE OFFSHORE WINDFARM PROJECT

Memorandum

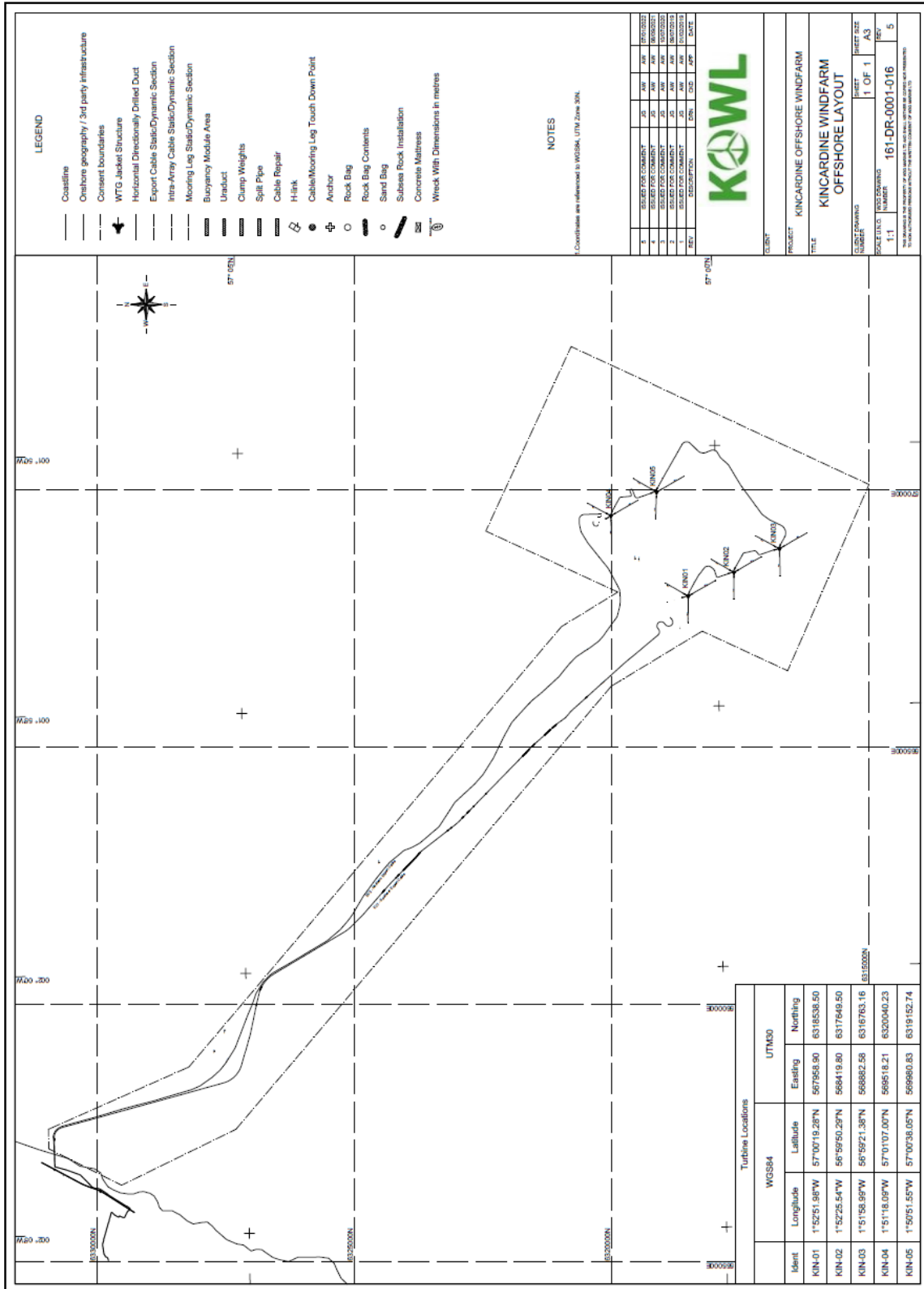
Document Number
KOWL-MEM-0001-078


Issue Date

13/09/2022

Page 7 of 8

5) Kincardine Offshore wind farm consent area



	KINCARDINE OFFSHORE WINDFARM PROJECT	Document Number KOWL-MEM-0001-078
	Memorandum	Issue Date 13/09/2022
		Page 8 of 8

General Safety Advice

For marine and aviation safety advice refer to document KOWL-PL-0004-001 – Lighting and Marking Plan which can be found on the Pilot-Renewables and Marine Scotland websites linked below:

<http://pilot-renewables.com/>

<https://www.gov.scot/Topics/marine/Licensing/marine/scoping/Kincardine>

6) Contact Details

Name	Job Title	Telephone	Email
John Giles	Senior Project Engineer	T: +44 (0)1224 060452 M: +44 (0) 751 901 2584	jgiles@w3gmarine.co.uk
Michael Sutherland	KOWL Fisheries Liaison Officer (FLO)	07928484343	avoca61@gmail.com

Signed by

[.....John Giles] (Name)

{.....} (Signature)

[.....Project Engineer.....] (Title)

[.....27/06/2022.....] (Date)