



**KINCARDINE OFFSHORE
WINDFARM PROJECT**

Memorandum

**Document Number
KOWL-MEM-0001-049**

Issue Date

18/12/2020

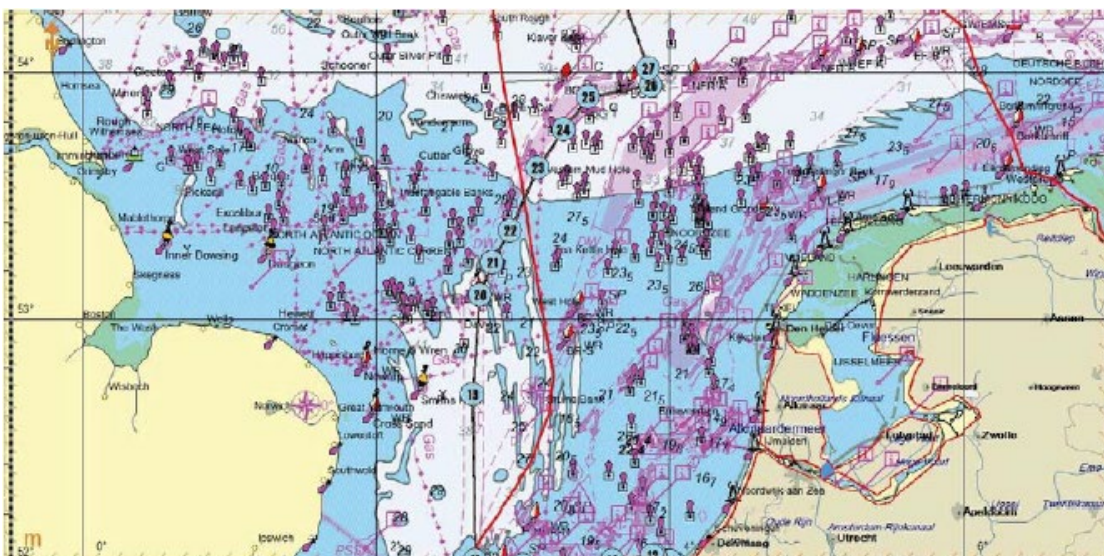
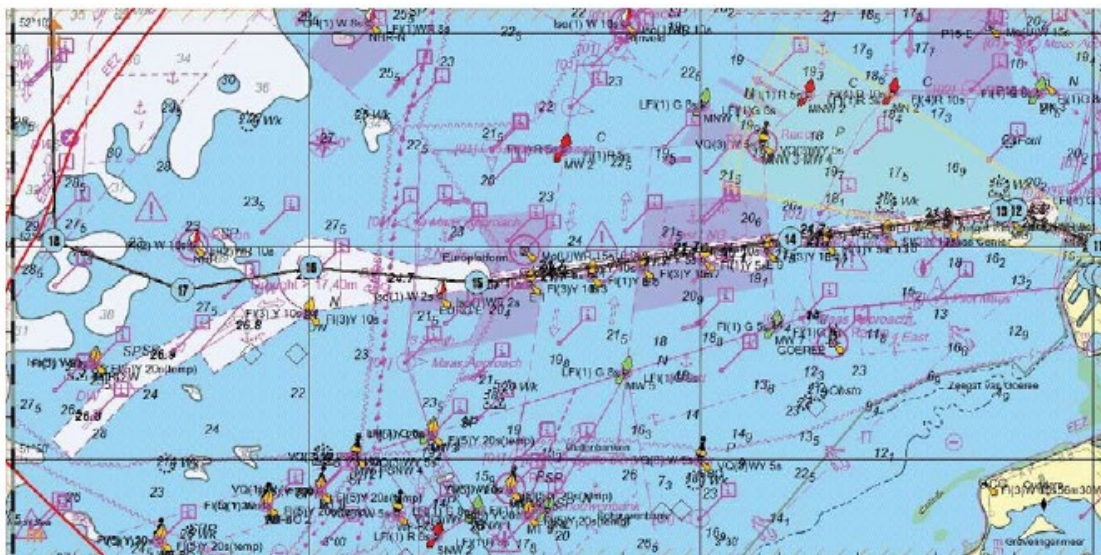
Page 1 of 5

**Notice to Mariners of Activities associated with the Development of the
Kincardine Offshore Windfarm
KIN-03 Tow to Site**

1) Summary

Please be advised that the floating turbine KIN-03 will be towed from its assembly port in Holland, to the wind farm site off Aberdeen. The expected date of the start of this tow is 21st December. The route is 480 nmi long, and is expected to last 9 or 10 days, however this operation is very weather sensitive and may incur delays.

2) Route of the tow after clearing Holland





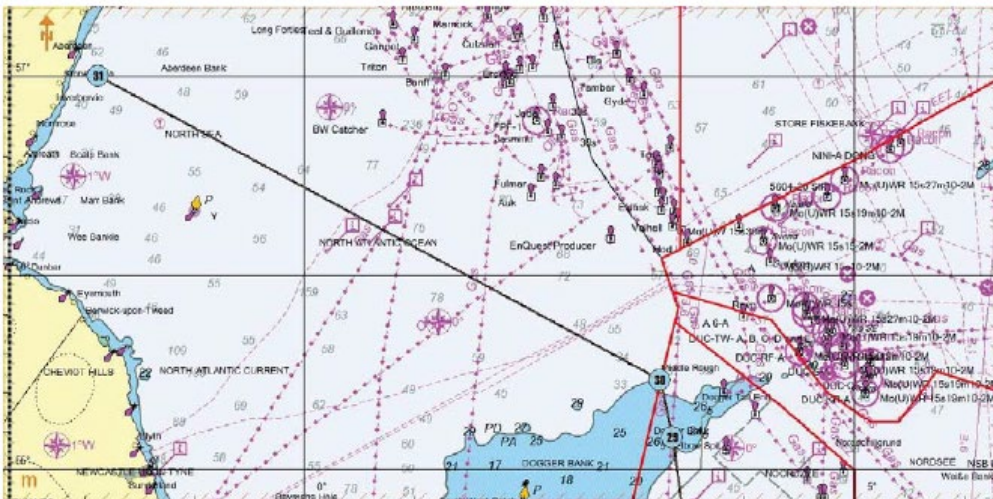
**KINCARDINE OFFSHORE
WINDFARM PROJECT**

Memorandum

Document Number
KOWL-MEM-0001-049

Issue Date
18/12/2020

Page 2 of 5



Length of tow	480 nmi
Speed of tow	3kts maximum
Duration of tow	9 to 10 days

*assuming no hold up

3) Way points for the tow



**KINCARDINE OFFSHORE
WINDFARM PROJECT**

**Document Number
KOWL-MEM-0001-049**

Memorandum

Issue Date

18/12/2020

Page 3 of 5

WP	Name:	Latitude	Longitude
1	Rotterdam	51°58.543'N	003°59.683'E
2		51°58.701'N	004°00.276'E
3		51°58.576'N	004°00.917'E
4		51°58.312'N	004°02.108'E
5		51°57.928'N	004°03.732'E
6		51°57.744'N	004°04.637'E
7		51°57.776'N	004°05.056'E
8		51°58.278'N	004°05.295'E
9		51°58.638'N	004°05.150'E
10		51°59.393'N	004°02.626'E
11		52°00.076'N	004°00.419'E
12		52°01.717'N	003°54.137'E
13		52°01.683'N	003°53.000'E
14		52°00.395'N	003°36.837'E
15		51°58.321'N	003°12.821'E
16		51°59.065'N	003°00.122'E
17		51°57.977'N	002°50.292'E
18		52°00.297'N	002°40.412'E
19		52°41.441'N	002°39.389'E
20		53°05.923'N	002°42.414'E
21		53°13.927'N	002°47.330'E
22		53°21.821'N	002°54.642'E
23		53°37.107'N	003°06.078'E
24		53°46.273'N	003°16.734'E
25		53°54.177'N	003°26.636'E
26		53°57.004'N	003°52.272'E
27		54°01.048'N	003°51.365'E
28		54°37.400'N	003°28.826'E
29		55°10.216'N	003°20.841'E
30		55°27.964'N	003°14.132'E
31	At windfarm site	57°17.602'N	001°24.772'W



KINCARDINE OFFSHORE WINDFARM PROJECT

Memorandum

Document Number
KOWL-MEM-0001-049

Issue Date

18/12/2020

Page 4 of 5

4) Consent Area

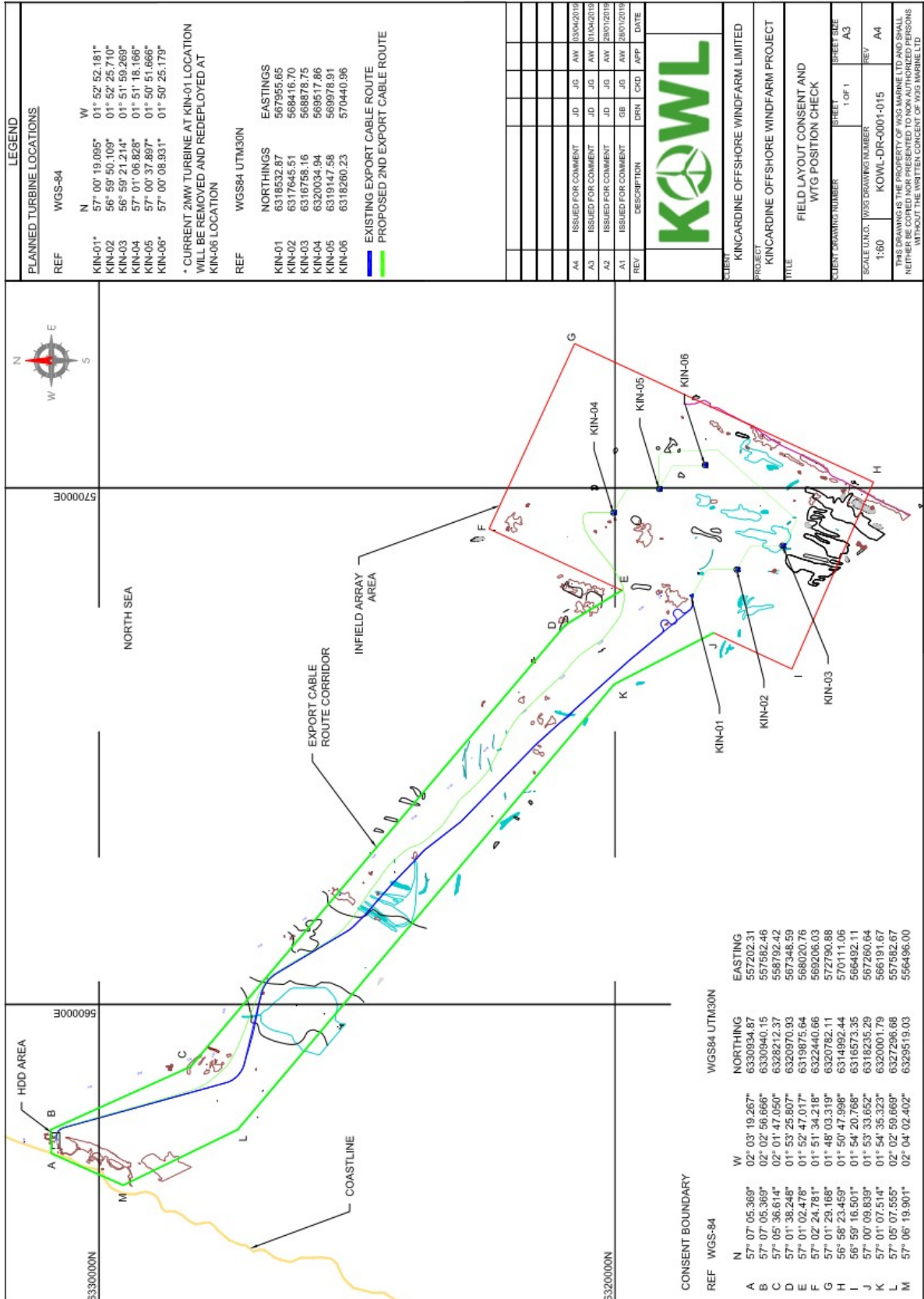



Figure 1: Project Site and Indicative Turbine Locations (NOT TO BE USED FOR NAVIGATION)

	KINCARDINE OFFSHORE WINDFARM PROJECT	Document Number KOWL-MEM-0001-049
	Memorandum	Issue Date 18/12/2020
		Page 5 of 4

6 General Safety Advice

The length of the catenary is expected to be 1,000m long, and between 30 to 120t bollard pull depending on speed and weather.

Mariners are advised to navigate with caution and keep continued watch on VHF Channel 16 when navigating in the area.

For marine and aviation safety advice refer to document KOWL-PL-0004-001 – Lighting and Marking Plan which can be found on the Pilot-Renewables and Marine Scotland websites linked below:

<http://pilot-renewables.com/>

<https://www.gov.scot/Topics/marine/Licensing/marine/scoping/Kincardine>

5 Contact Details

Name	Job Title	Telephone	Email
John Giles	Project Engineer	T: +44 (0)1224 060453 M: +44 (0) 7519 012584	jgiles@w3gmarine.co.uk
Michael Sutherland	KOWL Fisheries Liaison Officer (FLO)	07928484343	avoca61@gmail.com