	KINCARDINE OFFSHORE WINDFARM PROJECT	Document Number KOWL-MEM-0001-031
	Memorandum	Issue Date 05/12/2019
		Page 1 of 3

**Notice to Mariners of Activities associated with the Development of the
Kincardine Offshore Windfarm – LIDAR Anchor Recovery**

Please be advised that from 15th December the construction ship the RS Sentinel shall be moving into the KOWL wind farm site to carry out subsea gear recovery operations.

1. Consent Area

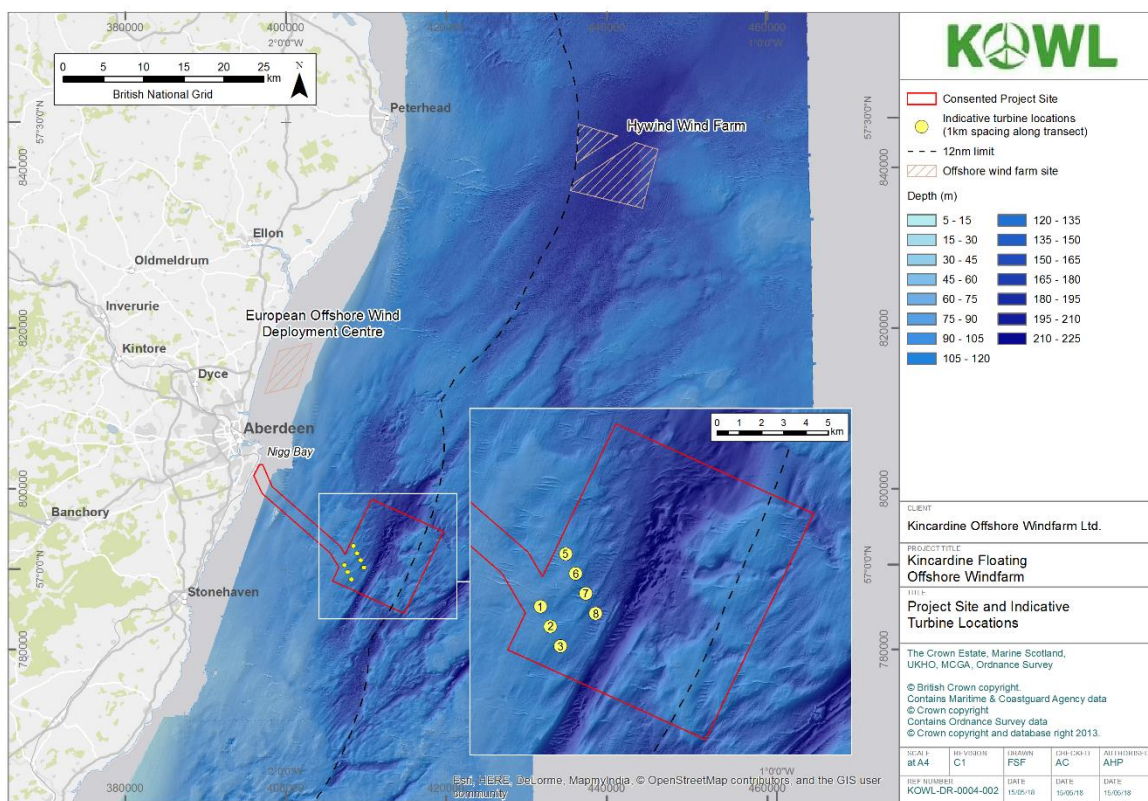




Figure 1: Project Site and Indicative Turbine Locations (NOT TO BE USED FOR NAVIGATION)

	KINCARDINE OFFSHORE WINDFARM PROJECT	Document Number KOWL-MEM-0001-031
	Memorandum	Issue Date 05/12/2019
		Page 2 of 3

2. Vessels Associated with the Activity

The vessel carrying out the works is the RS Sentinel .

Vessel Name	RS Sentinel	
Call Sign	9HA3754	
IMO	7106877	
DP Class	2	
Length Overall	60.9m	
Breadth	13.4m	
Draught	5m	

3. General Safety Advice


MARINERS ARE ADVISED to navigate with caution and keep continued watch, when navigating the area. Mariners are advised to navigate with caution and keep continued watch on VHF Ch. 16 when navigating the area.

4. General Safety Advice

For marine and aviation safety advice refer to document KOWL-PL-0004-001 – Lighting and Marking Plan which can be found on the Pilot-Renewables and Marine Scotland websites linked below:

<http://pilot-renewables.com/>

<https://www.gov.scot/Topics/marine/Licensing/marine/scoping/Kincardine>

	KINCARDINE OFFSHORE WINDFARM PROJECT	Document Number KOWL-MEM-0001-031
	Memorandum	Issue Date 05/12/2019
		Page 3 of 3

5. Contact Details

Name	Job Title	Telephone	Email
John Giles	Project Engineer	T: +44 (0)1224 060453 M: +44 (0) 7519 012584	jgiles@w3gmarine.co.uk
Michael Sutherland	KOWL Fisheries Liaison Officer (FLO)	07928484343	avoca61@gmail.com

Signed by

[.....] (Name)

[.....] (Signature)

[.....] (Title)

[.....] (Date)