

	<b>KINCARDINE OFFSHORE WINDFARM PROJECT</b>	<b>Document Number</b> <b>KOWL-MEM-0001-024</b>
	<b>Memorandum</b>	<b>Issue Date</b> <b>03/06/2019</b>
		<b>Page 1 of 3</b>

**Notice to Mariners of Activities associated with the Development of the Kincardine Offshore Windfarm – First Export Cable Protection**

Please be advised that it is planned that rock/ mattress placement will take place over areas of exposed cable within the consent corridor for the Kincardine Offshore Windfarm as shown in the figure below.

It is anticipated that the installation will take place between (10<sup>th</sup> June 2019) and (24<sup>th</sup> June 2019) excluding weather downtime.

**1. Area of Planned Activity**

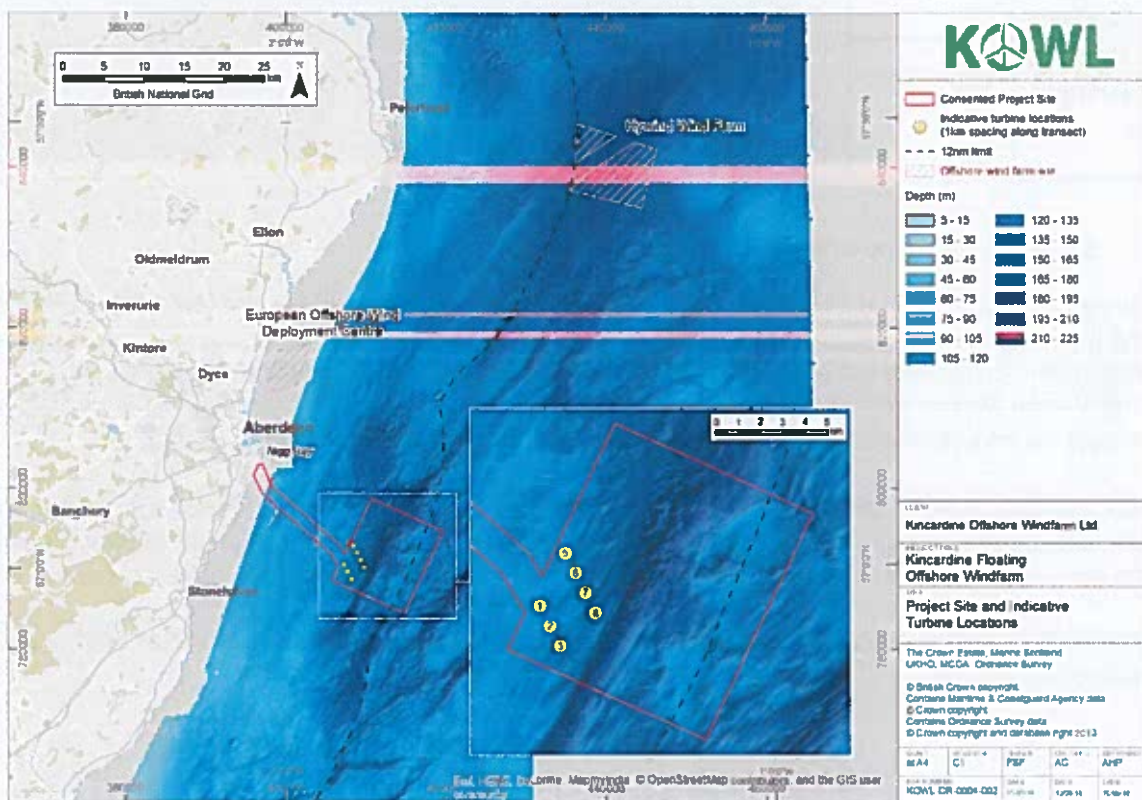


Figure 1: Project Site and Indicative Turbine Locations (NOT TO BE USED FOR NAVIGATION)

	<b>KINCARDINE OFFSHORE WINDFARM PROJECT</b>	<b>Document Number KOWL-MEM-0001-024</b>
	<b>Memorandum</b>	<b>Issue Date 03/06/2019</b>
		<b>Page 2 of 3</b>

## 2. Vessels Associated with the Activity

The vessel Simon Stevin will be onsite undertaking the installation works.

<b>Vessel Name</b>	Simon Stevin	
<b>Call Sign</b>	LXUB	
<b>MMSI</b>	253309000	
<b>DP Class</b>	2	
<b>Length Overall</b>	191.5m	
<b>Breadth</b>	40m	
<b>Draught</b>	9.25m	


## 3. General Safety Advice

All vessels engaged in the installation activity will exhibit appropriate lights and shapes prescribed by the International Regulations for Preventing Collisions at Sea; relative to their operations. All vessels engaged in the activity will also transmit an Automatic Identification System (AIS) message.

The Vessel Master will issue regular broadcasts whilst the buoy installation vessel is operating to ensure minimal disruption and that vessels maintain an appropriate and safe distance.

**ALL VESSELS ARE REQUESTED** to give the buoy installation vessel and equipment a wide berth. Vessels should maintain an appropriate and safe distance of 500m, where possible, when passing the buoy installation vessel and should pass at the lowest possible speed to avoid vessel wash effects.

**MARINERS ARE ADVISED** to navigate with caution and keep continued watch on VHF Ch. 16 when navigating the area.

	<b>KINCARDINE OFFSHORE WINDFARM PROJECT</b>	<b>Document Number</b> <b>KOWL-MEM-0001-024</b>
	<b>Memorandum</b>	<b>Issue Date</b> <b>03/06/2019</b>
		<b>Page 3 of 3</b>

**4. Contact Details**

Name	Job Title	Telephone	Email
John Giles	Senior Project Engineer	T: +44 (0)1224 060452 M: +44 (0) 751 901 2584	<a href="mailto:jpgiles@w3qmarine.co.uk">jpgiles@w3qmarine.co.uk</a>
Michael Sutherland	KOWL Fisheries Liaison Officer (FLO)	M: 07928484343	<a href="mailto:avoca61@gmail.com">avoca61@gmail.com</a>

**Signed by**

[..... JOHN GILES .....] (Name)

[.....  .....] (Signature)

[..... PROJECT ENGINEER .....] (Title)

[..... 03/06/2019 .....] (Date)

