	KINCARDINE OFFSHORE WINDFARM PROJECT	Document Number KOWL-MEM-0001-012
	Memorandum	Issue Date 31/08/2018
		Page 1 of 3

Notice to Mariners of Activities associated with the Development of the Kincardine Offshore Windfarm – Cable Load Out / Lay / Trenching

Please be advised that an Offshore Supply Vessel (MV Global Symphony) will be operating within the consent corridor, for the Kincardine Offshore Windfarm as shown in the figure below.

Operations are anticipated to take 10 days excluding weather down time. It is anticipated that the works will take place between (3rd September 2018) and (13th September 2018).

1. Area of Planned Activity

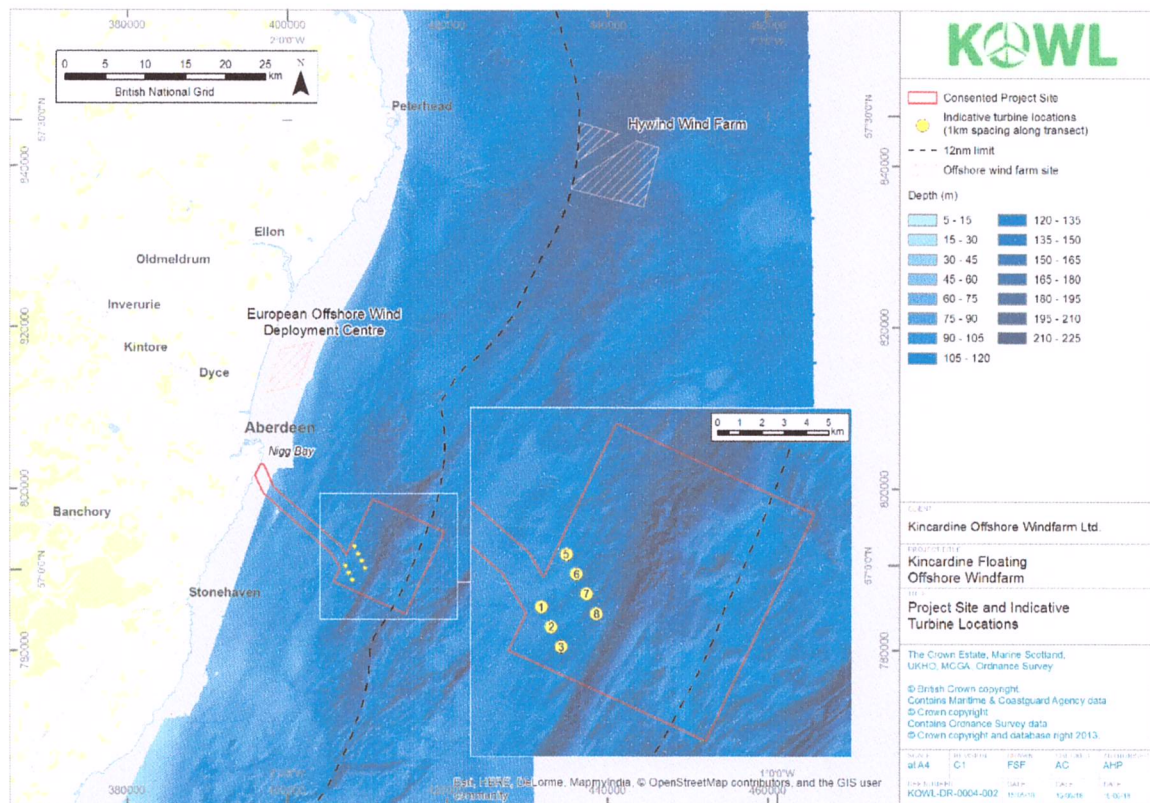


Figure 1: Project Site and Indicative Turbine Locations (NOT TO BE USED FOR NAVIGATION)

	KINCARDINE OFFSHORE WINDFARM PROJECT	Document Number KOWL-MEM-0001-012
	Memorandum	Issue Date 31/08/2018
		Page 2 of 3

2. Vessels Associated with the Activity

The vessel Global Symphony will be onsite undertaking the works.

Vessel Name	Global Symphony	
Call Sign	C6YY3	
IMO	9492581	
DP Class	2	
Length Overall	130.2m	
Breadth	24.04m	
Draught	6.1m	


The vessel Moremma PD 135 will be onsite acting as the Lay Route Guard Vessel.

Vessel Name	Moremma PD 135	
Call Sign	MKHC6	
IMO	-	
DP Class	N/A	
Length Overall	24m	
Breadth	7m	
Draught	3m	

3. General Safety Advice

All vessels engaged in the works will exhibit appropriate lights and shapes prescribed by the International Regulations for Preventing Collisions at Sea; relative to their operations. All vessels engaged in the activity will also transmit an Automatic Identification System (AIS) message.

The Vessel Master will issue regular broadcasts whilst the vessel is operating to ensure minimal disruption and that vessels maintain an appropriate and safe distance.

	KINCARDINE OFFSHORE WINDFARM PROJECT	Document Number KOWL-MEM-0001-012
	Memorandum	Issue Date 31/08/2018
		Page 3 of 3

ALL VESSELS ARE REQUESTED to give the vessel and equipment involved with the works a wide berth. Vessels should maintain an appropriate and safe distance of 500m, where possible, when passing the vessel and should pass at the lowest possible speed to avoid vessel wash effects.

MARINERS ARE ADVISED to navigate with caution and keep continued watch, when navigating the area. Mariners are advised to navigate with caution and keep continued watch on VHF Ch. 16 when navigating the area.

4. Contact Details

Name	Job Title	Telephone	Email
John Giles	Senior Project Engineer	T: +44 (0)1224 060452 M: +44 (0) 751 901 2584	jgiles@w3gmarine.co.uk
Richard Wakefield	Consenting and Environment Manager	0141 810 9870 07587635499	RWF@niras.com
Michael Sutherland	KOWL Fisheries Liaison Officer (FLO)	07928484343	avoca61@gmail.com

Signed by

[.....ALAN WEST.....] (Name)

[.....Alan West.....] (Signature)

[.....ENGINEER.....] (Title)

[.....31-8-2018.....] (Date)