


| | | |
|---|---|---|
|  | KINCARDINE OFFSHORE WINDFARM PROJECT | Document Number KOWL-MEM-0001-008 |
| | Memorandum | Issue Date 11/07/2018 |
| | | Page 1 of 3 |

Further Notice to Mariners of Activities associated with the Development of the Kincardine Offshore Windfarm – Towing WF1

This is an updated notice of the planned activity of Towing of WF1. Due to unforeseen circumstances the intended schedule has now been amended below.

Please be advised that an offshore supply ship will be towing the WF1 from the Firth of Forth to Dundee, for the Kincardine Offshore Windfarm as shown in the figure below.

This operation is now anticipated to take place over a 2-day window, excluding weather down time. It is anticipated that the works will take place between (12th July 2018) and (13th July 2018).

1. Area of Planned Activity

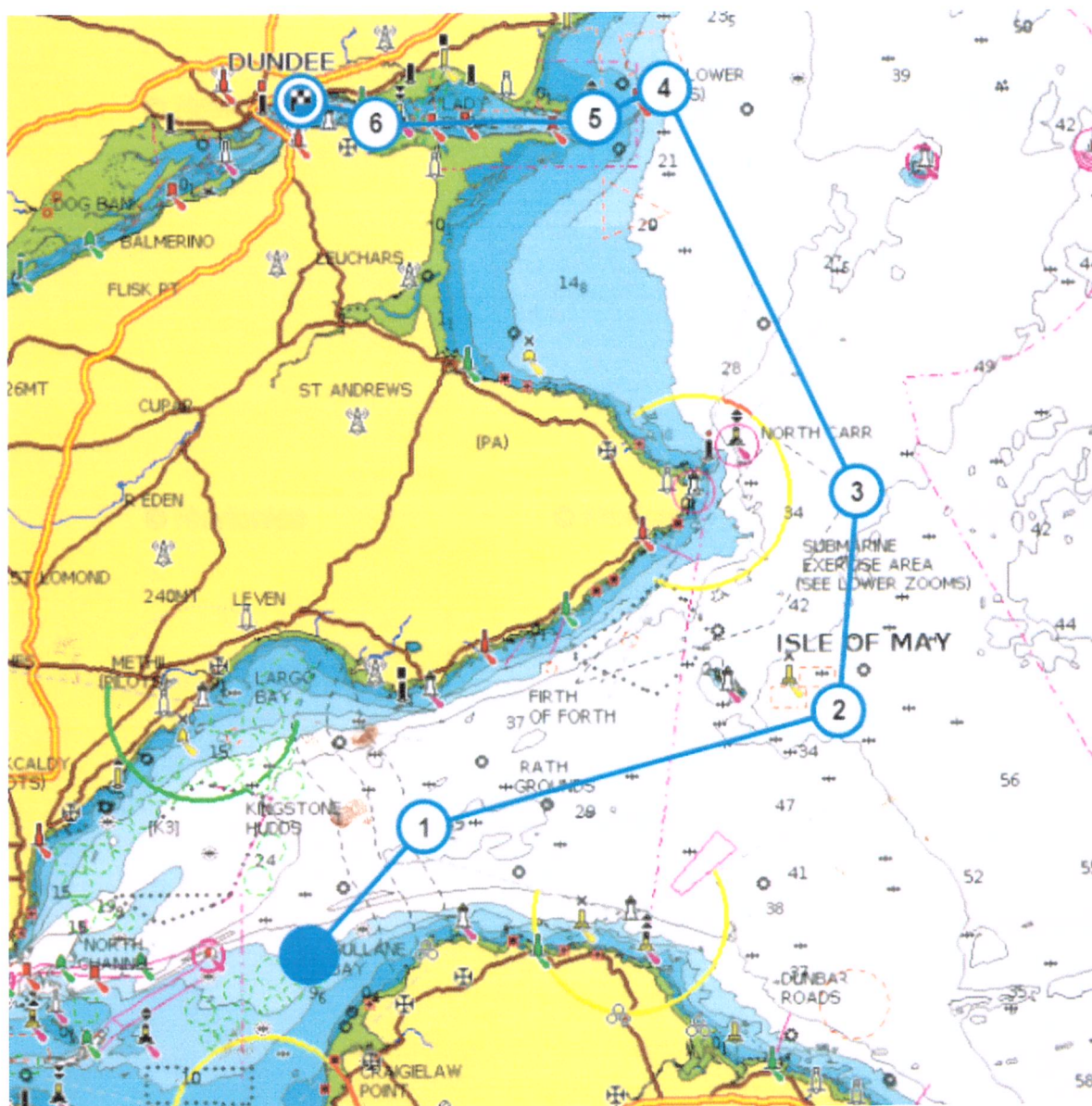


Figure 1: Firth of Forth to Dundee Tow Route

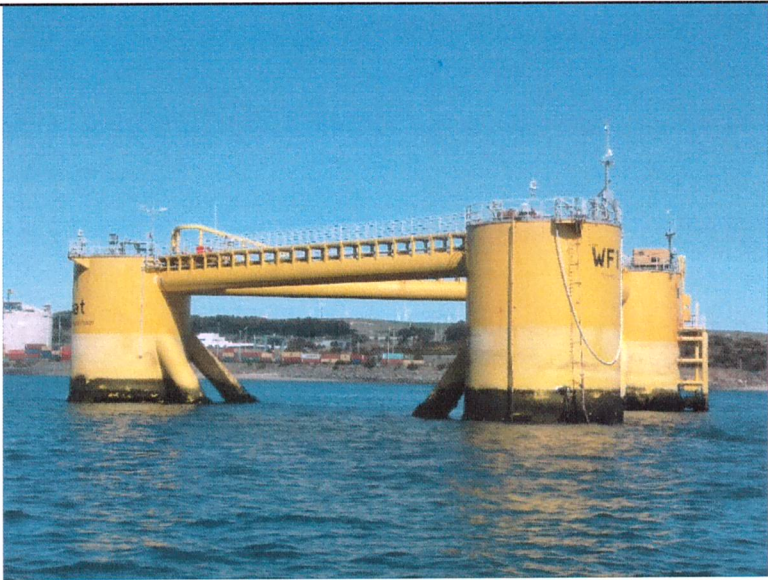
| | | |
|---|---|---|
|  | KINCARDINE OFFSHORE WINDFARM PROJECT | Document Number KOWL-MEM-0001-008 |
| | Memorandum | Issue Date 11/07/2018 |
| | | Page 2 of 3 |

2. Vessels Associated with the Activity

The vessel Atlantic Kestrel will be used in the Towing Operation.


| | | |
|-----------------------|------------------|---|
| Vessel Name | Atlantic Kestrel |  |
| Call Sign | XJBE | |
| IMO | 9557446 | |
| DP Class | 2 | |
| Length Overall | 85.2m | |
| Breadth | 22m | |
| Draught | 6.5m | |

Floating foundation WF1 is the towed vessel.

| | | |
|-----------------------|----------|--|
| Name | WF1 |  |
| Length Overall | *65.264m | |
| Breadth | 75.36m | |

3. General Safety Advice

All vessels engaged in the Towing Operation will exhibit appropriate lights and shapes prescribed by the International Regulations for Preventing Collisions at Sea; relative to their operations. All vessels engaged in the activity will also transmit an Automatic Identification System (AIS) message. The Vessel Master will issue regular broadcasts whilst the vessel is operating to ensure minimal disruption and that vessels maintain an appropriate and safe distance.

| | | |
|---|---|--|
|  | KINCARDINE OFFSHORE WINDFARM PROJECT | Document Number KOWL-MEM-0001-008 |
| | Memorandum | Issue Date 11/07/2018 |
| | | Page 3 of 3 |

ALL VESSELS ARE REQUESTED to give the vessel and WF1 a wide berth. Vessels should maintain an appropriate and safe distance of 500m, where possible, when passing the vessel and should pass at the lowest possible speed to avoid vessel wash effects.

MARINERS ARE ADVISED to navigate with caution and keep continued watch, when navigating the areas. Mariners are advised to keep continued watch on VHF Ch. 16 when navigating the area.

4. Contact Details

| Name | Job Title | Telephone | Email |
|-------------------|------------------------------------|-------------------------------------|--|
| John Giles | Senior Project Engineer | T: 01224 060452 M: 0751 901 2584 | jgiles@w3gmarine.co.uk |
| Richard Wakefield | Consenting and Environment Manager | T: 0141 810 9870 M: 07587635499 | RWF@niras.com |
| Fernando Sada | Project Engineering Coordinator | M: +34 669 54 65 69 | fjsada@grupocobra.com |

Signed by

[.....*John Giles*.....] (Name)

[.....*[Signature]*.....] (Signature)

[.....*PROJECT ENGINEER*.....] (Title)

[.....*11/07/2018*.....] (Date)