	KINCARDINE OFFSHORE WINDFARM PROJECT	Document Number KOWL-MEM-0001-004
	Memorandum	Issue Date 27/06/2018
		Page 1 of 3

Notice to Mariners of Activities associated with the Development of the Kincardine Offshore Windfarm – Towing WF1

This is a notice of planned activity of Towing of WF1.

Please be advised that an offshore supply ship will be towing the WF1 from the Firth of Forth to Dundee, for the Kincardine Offshore Windfarm as shown in the figure below.

Operations are anticipated to take place over a 3-day window, excluding weather down time. It is anticipated that the works will take place between (28th June 2018) and (30th June 2018).

1. Area of Planned Activity

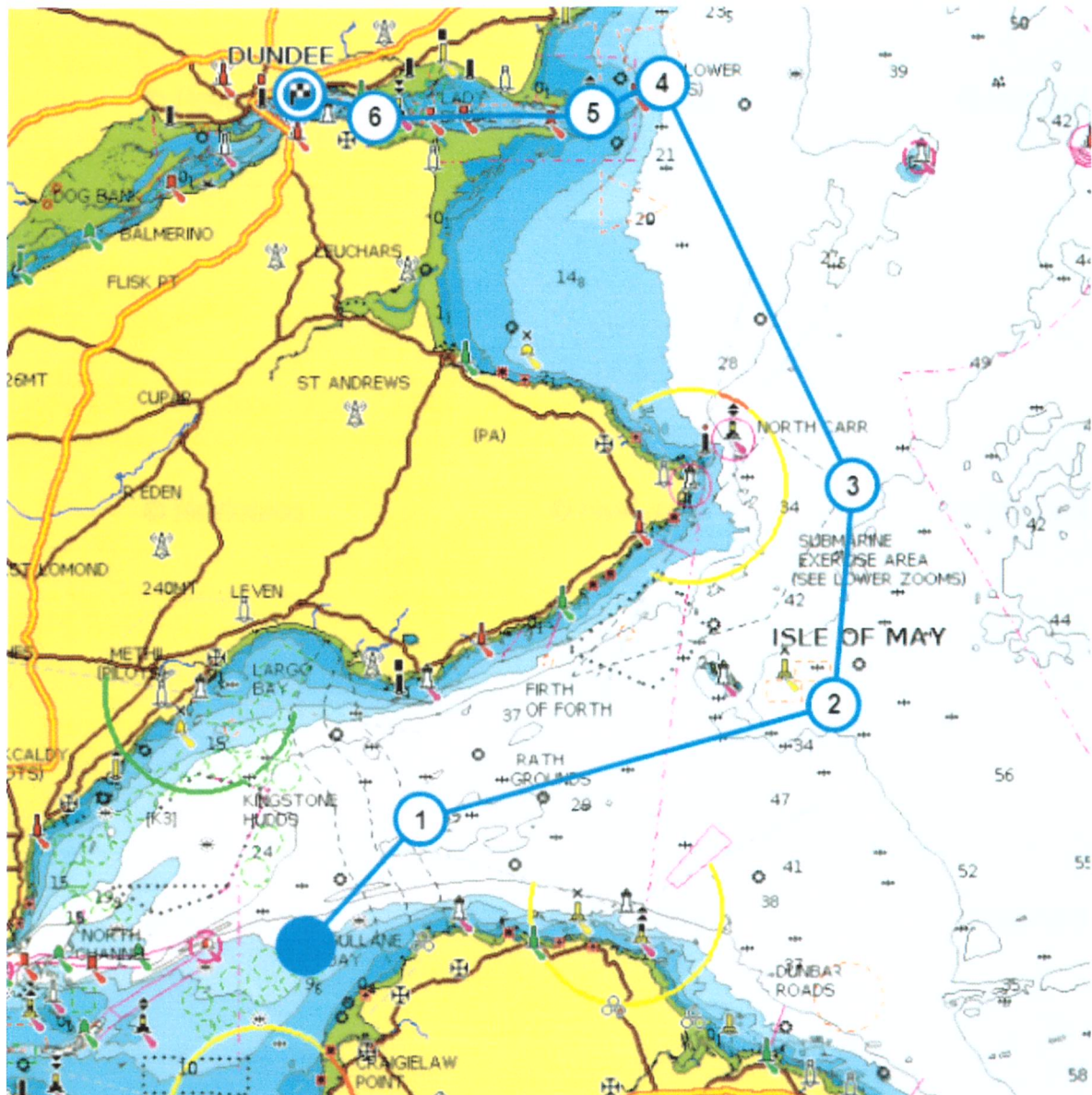


Figure 1: Firth of Forth to Dundee Tow Route



KINCARDINE OFFSHORE WINDFARM PROJECT

Memorandum

Document Number
KOWL-MEM-0001-004

Issue Date

27/06/2018

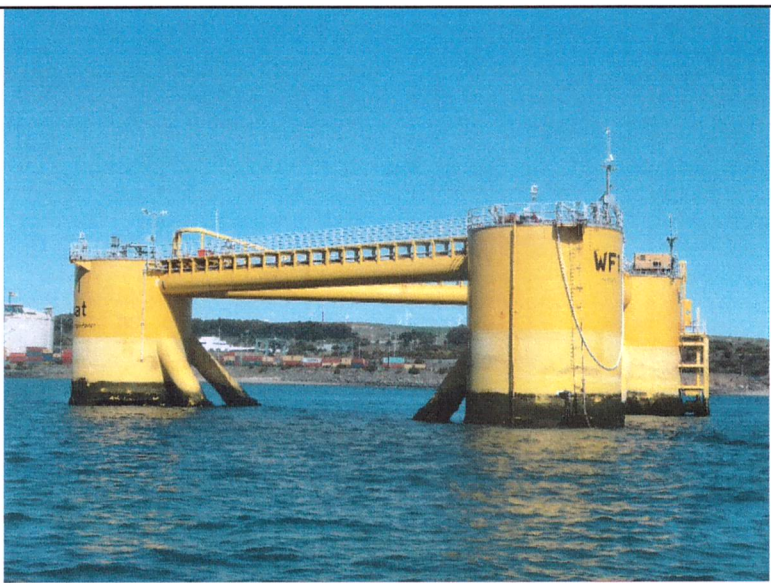
Page 2 of 3

2. Vessels Associated with the Activity

The vessel Atlantic Kestrel will be used in the Towing Operation.

Vessel Name	Atlantic Kestrel	
Call Sign	XJBE	
IMO	9557446	
DP Class	2	
Length Overall	85.2m	
Breadth	22m	
Draught	6.5m	

Floating foundation WF1 is the towed vessel.

Name	WF1	
Length Overall	*65.264m	
Breadth	75.36m	

3. General Safety Advice

All vessels engaged in the Towing Operation will exhibit appropriate lights and shapes prescribed by the International Regulations for Preventing Collisions at Sea; relative to their operations. All vessels engaged in the activity will also transmit an Automatic Identification System (AIS) message.

The Vessel Master will issue regular broadcasts whilst the vessel is operating to ensure minimal disruption and that vessels maintain an appropriate and safe distance.

	KINCARDINE OFFSHORE WINDFARM PROJECT	Document Number KOWL-MEM-0001-004
	Memorandum	Issue Date 27/06/2018
		Page 3 of 3

ALL VESSELS ARE REQUESTED to give the vessel and WF1 a wide berth. Vessels should maintain an appropriate and safe distance of 500m, where possible, when passing the vessel and should pass at the lowest possible speed to avoid vessel wash effects.

MARINERS ARE ADVISED to navigate with caution and keep continued watch, when navigating the areas. Mariners are advised to keep continued watch on VHF Ch. 16 when navigating the area.

4. Contact Details

Name	Job Title	Telephone	Email
John Giles	Senior Project Engineer	T: 01224 060452 M: 0751 901 2584	jgiles@w3gmarine.co.uk
Richard Wakefield	Consenting and Environment Manager	T: 0141 810 9870 M: 07587635499	RWF@niras.com
Fernando Sada	Project Engineering Coordinator	M: +34 669 54 65 69	fjsada@grupocobra.com

Signed by

[.....*John Giles*.....] (Name)

[.....*[Signature]*.....] (Signature)

[.....*PROJECT ENGINEER*.....] (Title)

[.....*27/06/2018*.....] (Date)